

# MOHAWK TP-26 AND TP-30 SPECIFICATIONS

# 26,000 & 30,000 LB. CAPACITY TWO POST

<b>Capacity</b> .....	<b>TP-26:</b> 26,000 Lbs. (11793.41 Kg) <b>TP-30:</b> 30,000 Lbs. (13607.78 Kg)
<b>Lifting speed</b> .....	142 seconds
<b>Motor rating</b> .....	<b>TP-26/30:</b> 5 HP 208-230v or 440-480v 3 Phase
<b>Arm Pad height</b> .....	<b>TP-26/30:</b> 7" (20.32 cm) minimum
<b>Lifting height (Stroke)</b> .....	6' (1.83 m)
<b>Arm height @ full rise</b> .....	6' 7" (2.01 m)
<b>Max. Pad height with Adaptors</b> ....	7' 5" (2.26 m)
<b>Overall width</b> .....	15' (4.57 m) [wider base model 17' or 5.18 m]
<b>Width between Posts</b> .....	12' (3.66 m)
<b>Width between Carriage</b> .....	9' 9" (2.97 m)
<b>Column height</b> .....	11' (3.35 m)
<b>Max. Cylinder height</b> .....	13' 6 1/8" (4.12 m)
<b>Overhead Hydraulic Line</b> .....	Adjustable to any height or routed in floor
<b>Shipping weight</b> .....	<b>TP-26:</b> 8880 Lbs. (4027.90 Kg) <b>TP-30:</b> 9300 Lbs. (4218.41 Kg)
<b>Concrete floor requirements</b> .....	8" or 12" of 4000 psi concrete qualified
<b>Anchoring system</b> .....	12" floor: 18 3/4" x 10" Wej-it bolts 8" floor: 28 3/4" x 8" Wej-it bolts
<b>Lift synchronization</b> .....	Hydraulic Fluid Displacement using no chains, cables nor overhead obstructions
<b>Mechanical Safety Locks</b> .....	Multi-position, interlocked redundant safety systems.
<b>Hydraulic Safety System</b> .....	Automatic: all position
<b>Swing Arm Restraints</b> .....	Automatic engaging upon ascent
<b>Cylinders</b> .....	2 (1 per column)
<b>5", 7 1/2", 10" Frame Adaptors</b> .....	4 Each included as standard equipment (Stackable)
<b>Carriage Bearings</b> .....	(16) 5" (12.7 cm) diameter (8 per carriage) Double sealed self lubricating
<b>Thrust Bearings</b> .....	(8) 5" (12.7 cm) diameter (4 per Carriage) Double sealed self lubricating
<b>Floor access between Posts</b> .....	Clear and unobstructed
<b>Warranty</b> .....	5 Years limited lifetime* on Cylinders

Mohawk builds the best products with the finest materials, to the highest standards. Just compare our lifts. Our staff will assist you with a fleet evaluation, design assistance and answer any technical questions you have. We invite your calls.

Mohawk lifts are manufactured in compliance with the following standards: OSHA, ALI, ANSI, ASME, AISI, ASTM, ASA, NEC, AWG, NEMA.

**MEETS NATIONAL OSHA CODE FOR LIFTS.**



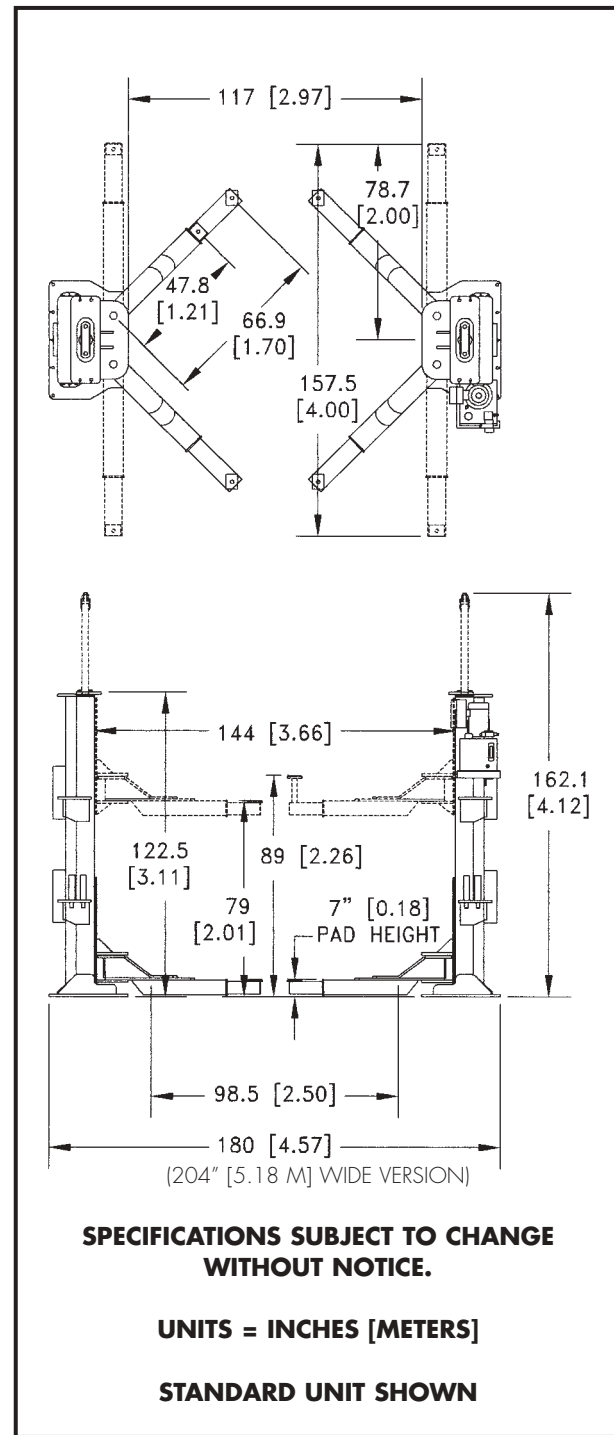
Mohawk Resources, LTD.  
P.O. Box 110  
65 Vrooman Ave  
Amsterdam, NY 12010  
(800) 833-2006  
(518) 842-1431  
FAX: (518) 842-1289  
[www.mohawklifts.com](http://www.mohawklifts.com)



GSA contract #GSO7F-70998



Available under state contract in



DISTRIBUTED BY:

## MODELS TP-26 AND TP-30



**MOHAWK** - Because...  
**Quality Lifts Last Forever**  
**Made in the U.S.A.**

# MOHAWK TP-26/30

**SOLID, SAFE, PROVEN  
& CERTIFIED.**



## HEAVY DUTY LIFTS FOR... HEAVY DUTY SERVICE



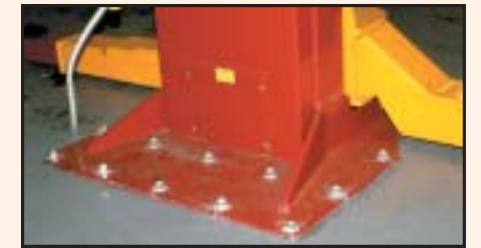
▲ Mohawk's TP-26, TP-30 gives FULL under vehicle access for all repairs, yet takes up minimal bay space, while leaving the wheels hanging free for tire, brake or any other necessary repairs.



▲ Mohawk's all position mechanical and hydraulic safety systems lock the vehicles at ALL working heights. Mohawk safeties consist of 1 1/2" plate steel locks engaging into the slotted carriage lock racks every 6" inches.



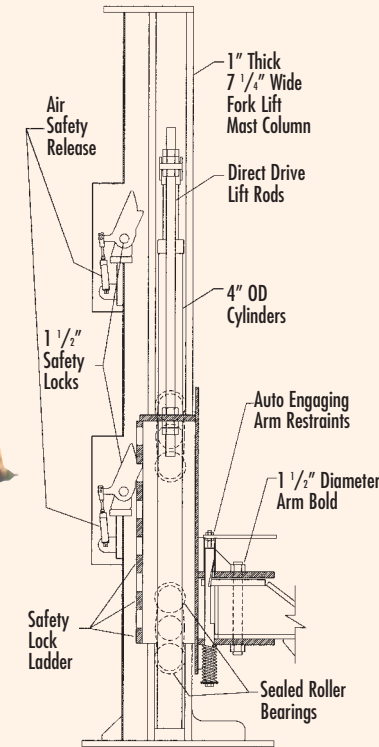
▲ 5 HP 3 phase power unit delivers fluid equally to twin hydraulic cylinders for quick and smooth lifting.



▲ Mohawk's large and stable footprint measures 48" wide x 30" (or 42") deep and is made of 1" thick plate. Mohawk's baseplate gives stability to the lift, while distributing the load to the shop floor. The TP-26/TP-30 requires 12" of concrete or optional footprint (shown) for shops with only 8" floors.



7" wide by 1" thick  
**HIGH STRENGTH** fork lift channel construction



### Mohawk TP-26/30 design

- Lifts vehicles up to 30,000 lbs.
- Surface mounted design bolts to the shop floor.
- Twin post design allows complete under vehicle access for all repairs yet leaves the wheels hanging free for tire and brake service.
- Takes up less shop space than ramp lifts.
- All safety certified to meet national and local OSHA & ANSI codes (ANSI/ALI ALCTV-1998) for the safety of your shop's employees.
- No in-ground oil tanks, no digging for installations, making installations fast and service easy.
- Medium thru Heavy Duty vehicles, Mohawks TP-26 or TP-30 lifts them.
- Hammertone paint finish for lasting durability.



Mohawk lifts **DO NOT** use height restrictive overhead cable covers that limit lifting height.

### Features

- Constructed of heavy 7" x 1" fork lift mast channels (NOT formed sheet metal) for a lifetime of trouble free service.
- Each carriage rides on double sealed, self lubricating ball bearing rollers (NOT plastic slide blocks) for a lifetime of maintenance free service.
- Direct drive lifting rods attached to each cylinder and carriage (no cables, chains, or pulleys) means no parts to wear or maintain
- WIDE 48" base for stability.

**Large 6' x 4 1/2" direct drive lifting cylinders.**

**Spring loaded, automatic arm restraints.**

Mechanic is 6'3"

**Dual mechanical safety locks on both columns**

**5", 7 1/2" & 10" Truck adaptors included**

**48" Wide base for stability**

### Benefits

- Arm length designed to accommodate your specific fleet wheel bases.
- 5", 7 1/2" and 10" stacking truck adaptors included to reach truck frames and get around fuel tanks or tool boxes.
- Built to last **forever**.

### Safeties

- Hand-held pendant control to raise the lift, or lower by releasing both mechanical locks & allowing hydraulic fluid return to the reservoir.
- Release the mechanical locks with Mohawk's air cylinders. Upon release, safeties immediately re-engage.
- 26,000 or 30,000 lb. capacity to safely raise loaded work and utility trucks.
- 12 position 1 1/2" steel plate safety locks in each post start engaging at 5" and continue every 6" through the full lifting height.
- Patented Hydraulic locking system, backed by velocity fuses and Pressure Compensated Flow Control valving.



▲ Mohawk columns are constructed of 1" thick, HIGH STRENGTH fork lift mast channels, using 24 double sealed, self lubricating ball bearing rollers to smoothly raise the lift, using large 4 1/2" cylinders for a lifetime of trouble free service.



▲ Mohawk stackable truck adaptors are included for access around gas tanks and tool boxes to reach the vehicle frame.